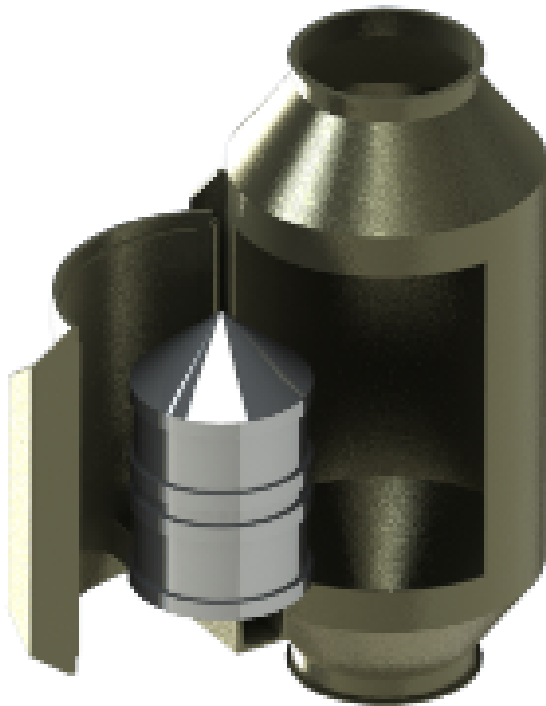


Scanhugger HRS 150 / 200 / 250



INFEED DIAMETER

150 / 200 / 250 mm

APPLICATION HEIGHT

695 / 790 / 950 mm

WIDTH

250 / 350 / 450 mm

WEIGHT

37 / 81 / 124 kg

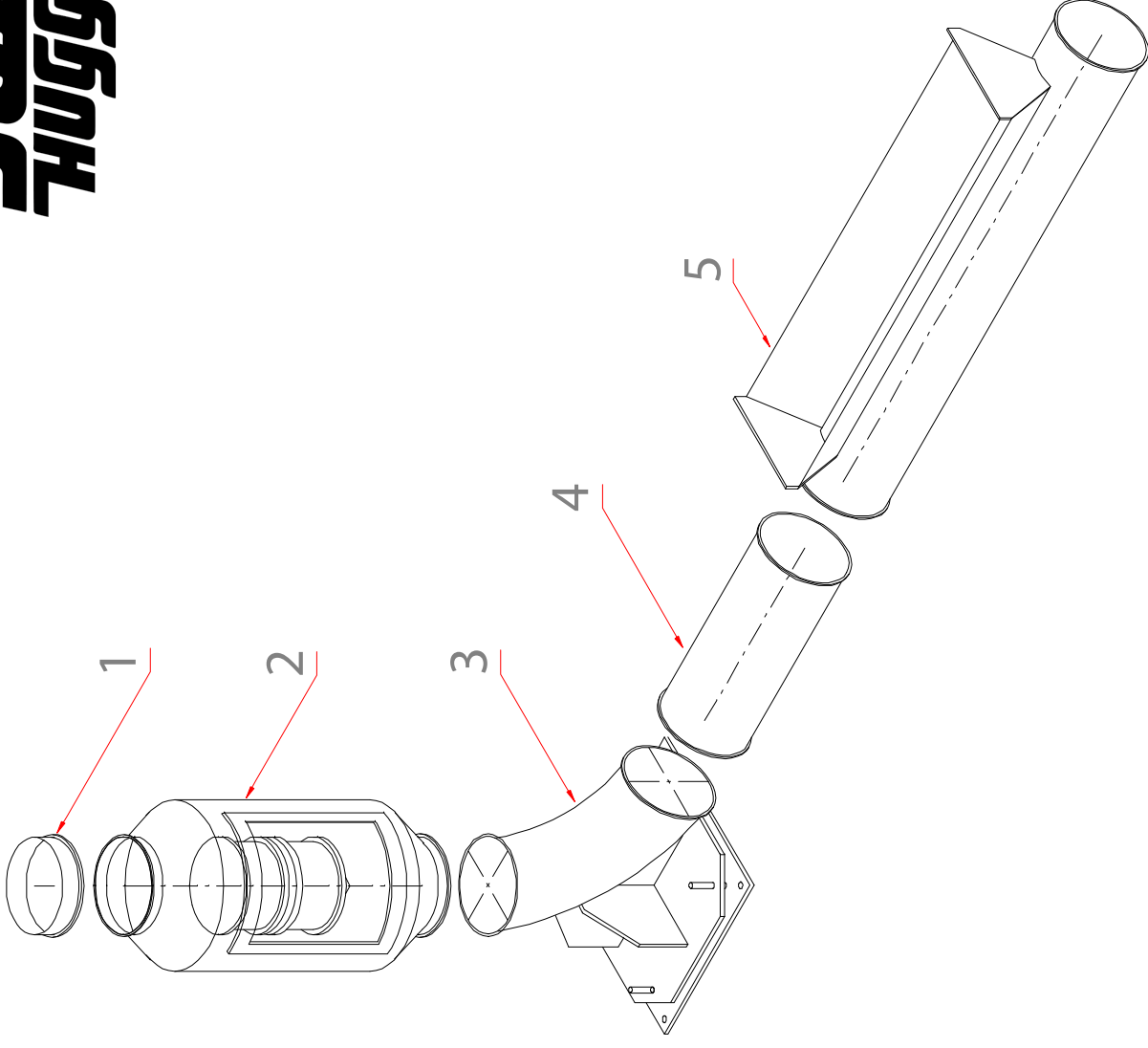
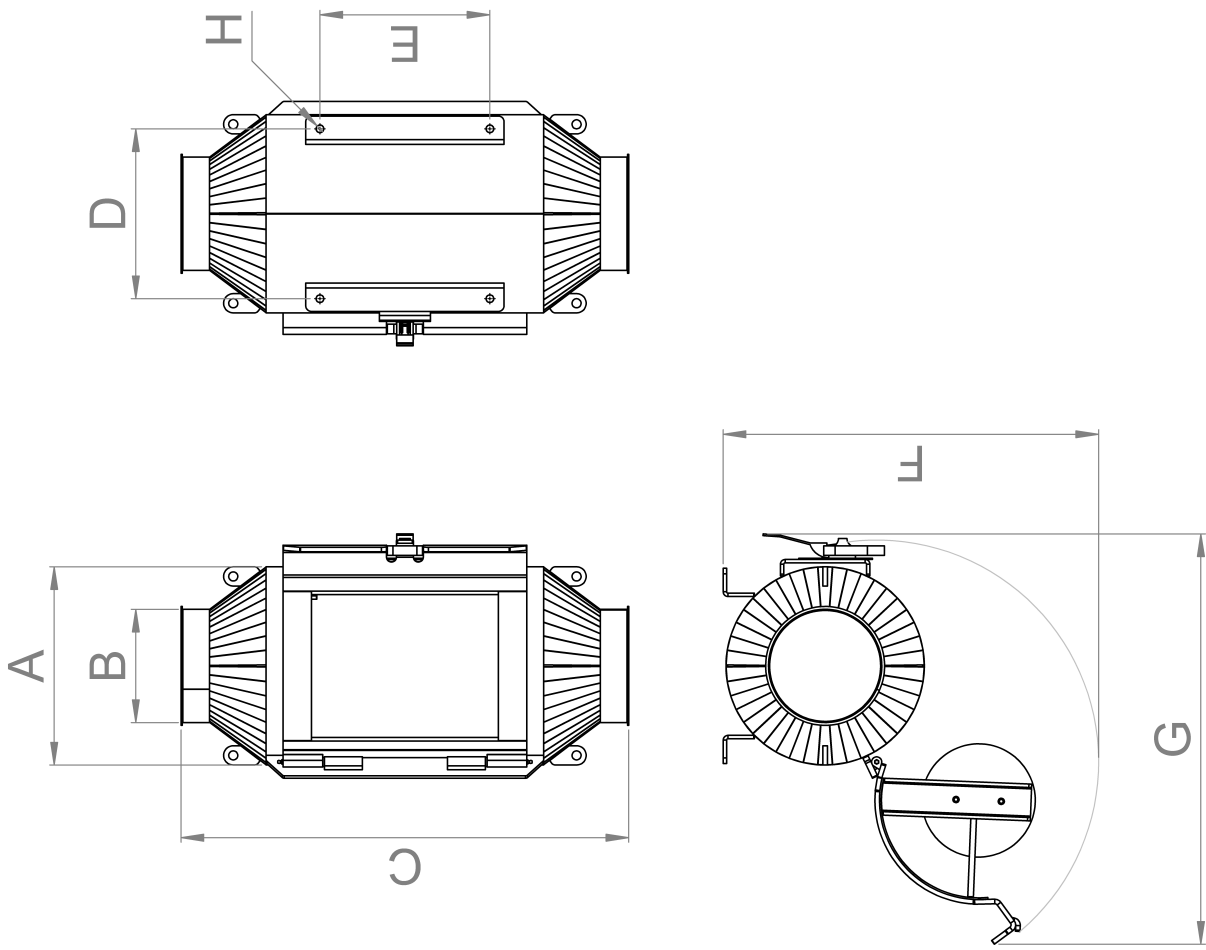
Scanhugger HRS tube magnets have been specially developed for thorough removal of ferrous metal parts from materials in granular form during transport in pipeline systems. The tube magnets are available in 3 standard sizes HRS 150, HRS 200 and HRS 250. They are designed to be mounted in connection to the Scanhugger Shredders HL - series.

The tube magnet has a steel housing with a cylindrical magnet core mounted in the center of the housing. The material spreads around the magnet core and the ferrous metal parts are separated.

The tube magnets are fitted with flanges so they, form a single unit with the pipeline system after mounting. Tube magnets must be mounted in a vertical position, as it gives the best distribution of the material and an optimal separation.

There is access to the magnet core through a side door in the housing. The magnet core is mounted on a base attached to the door, and the magnet core swings out when the door is opened.

The magnets are manufactured with three different standard sizes for connection tubes with a diameter of 150 mm, 200 mm or 250 mm. If other sizes are required, please contact us.



All technical alterations reserved / Tekniske ændringer forbeholdes

Dimension / dimension	HRS 150	HRS 200	HRS 250
A	Ø 250 mm	Ø 350 mm	Ø 450 mm
B	Ø 154 mm	Ø 200 mm	Ø 254 mm
C	695 mm	790 mm	950 mm
D	220 mm	300 mm	400 mm
E	220 mm	300 mm	400 mm
F	486 mm	663 mm	826 mm
G	596 mm	724 mm	899 mm
H	Ø 13.5 mm	Ø 13.5 mm	Ø 13.5 mm
Weight / Vægt	37 kg	81 kg	124 kg

Pos.no.	Description / Betegnelse
1	Welding flange / Svejseflange
2	Tube magnet / Rørmagnet
3	Magnet foot / Fod rørmagnet
4	Tube / Spænderingsrør
5	Dust pick-up / Sugestuds