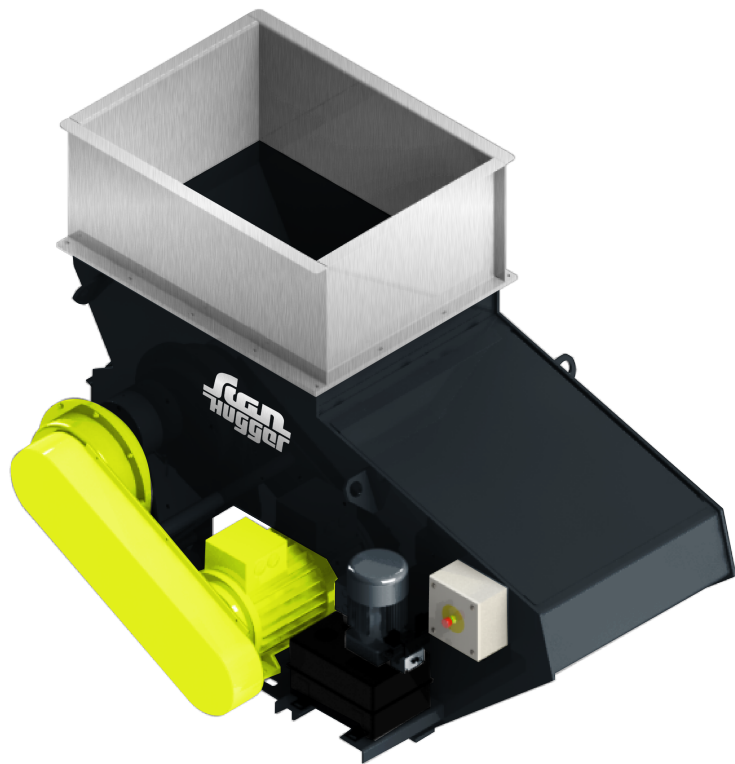


# Scanhugger HL 2/7/10



The Scanhugger HL 2/7/10 is the smallest shredder we offer. The cost-effective shredder with an output of up to 200 kg/hour and small footprint makes it an ideal choice for inhouse production. The shredder is designed for a large range of wood waste, ranging from hard- and softwood, trim blocks, particleboard, MDF, furniture parts, paper, and cardboard.

INFEED SIZE

**720 x 1000 mm**

ROTOR SPEED

**100 RPM**

SOUND LEVEL

**81 dB**

MAIN MOTOR

**7.5 - 11 kW**

CHIP SIZE

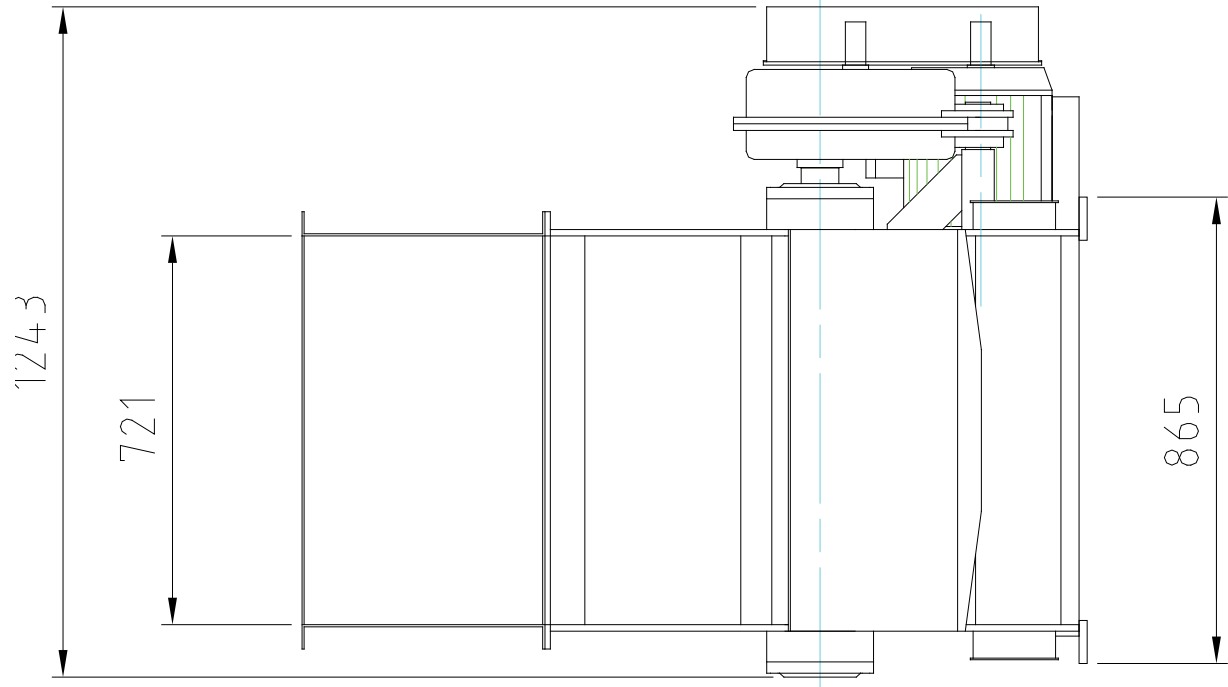
**20 - 40 mm**

CAPACITY

**130 - 200 kg/h**

WEIGHT

**1300 kg**



TECHNICAL ALTERATIONS RESERVED

