

Scanhugger HK 35/10



Scanhugger HK-Guillotine is designed to chop wood waste without the attendance of an operator. With a small footprint and low operation noise, makes it ideally suited for locating in the factory right at the source of the waste. Operating inline with a gang saw, a straight-line rip saw or panel saw. Using a closed-looped hydraulic system, the knife is continuously cycling for optimal output. The cut length is set by an adjustable gate.

INFEED SIZE

350 x 80 mm

KNIFE CYCLE

15 - 25 per min

INFEED SPEED

6 - 12 m/min

HYDRAULIC MOTOR

7.5 kW

CUTTING LENGTH

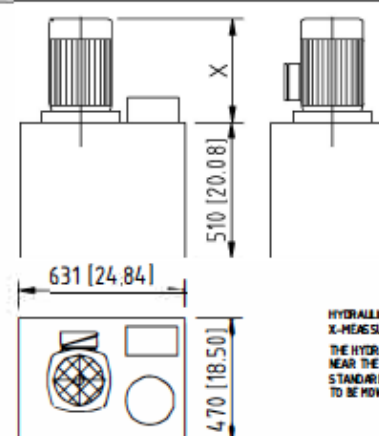
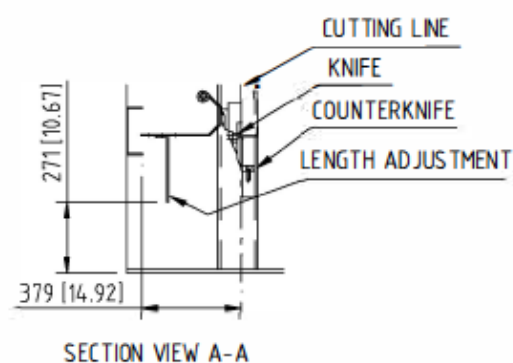
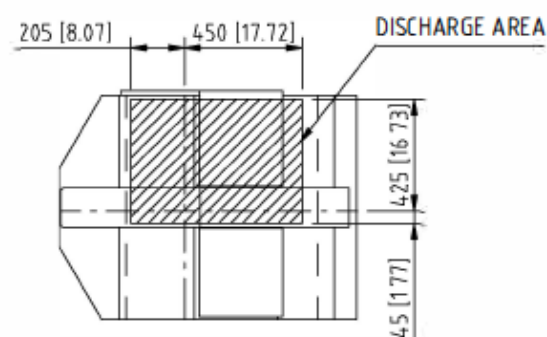
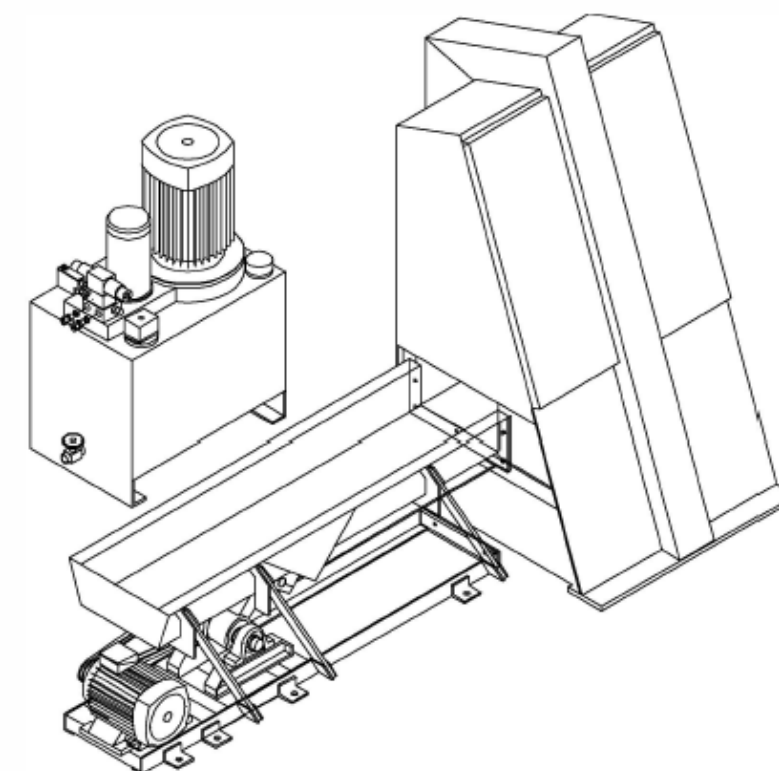
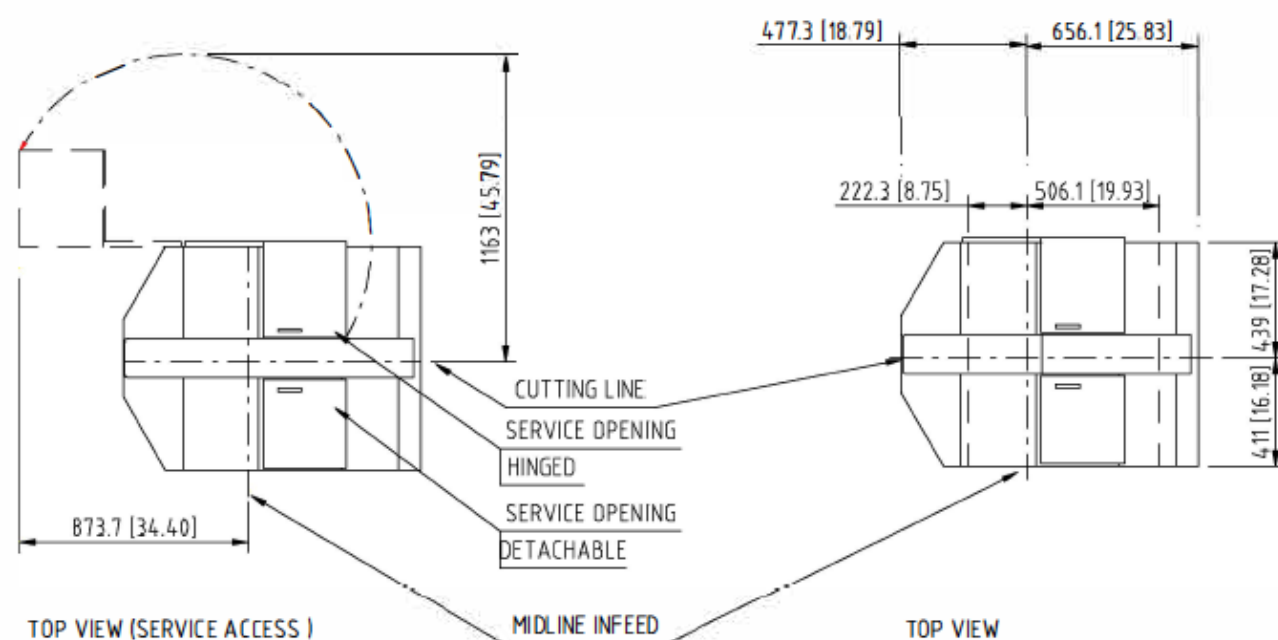
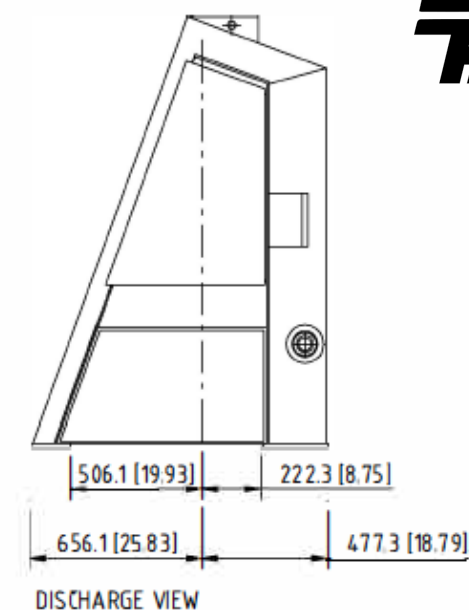
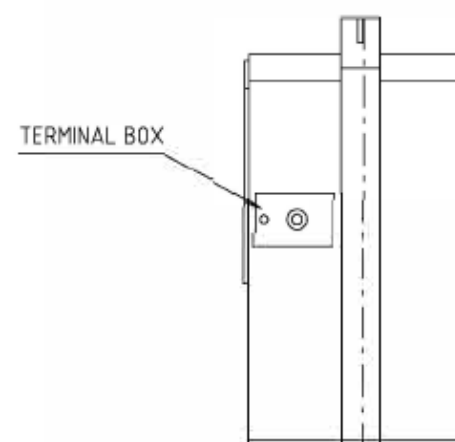
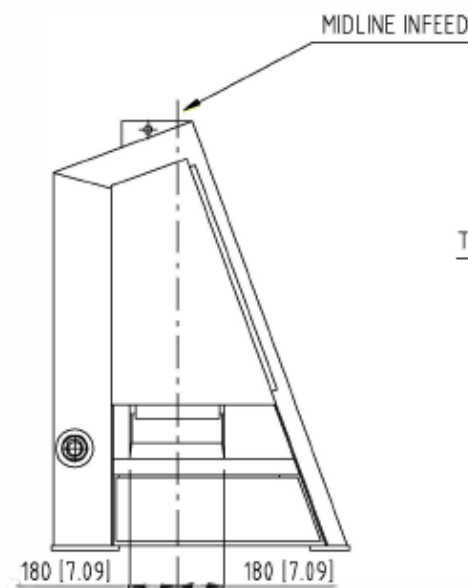
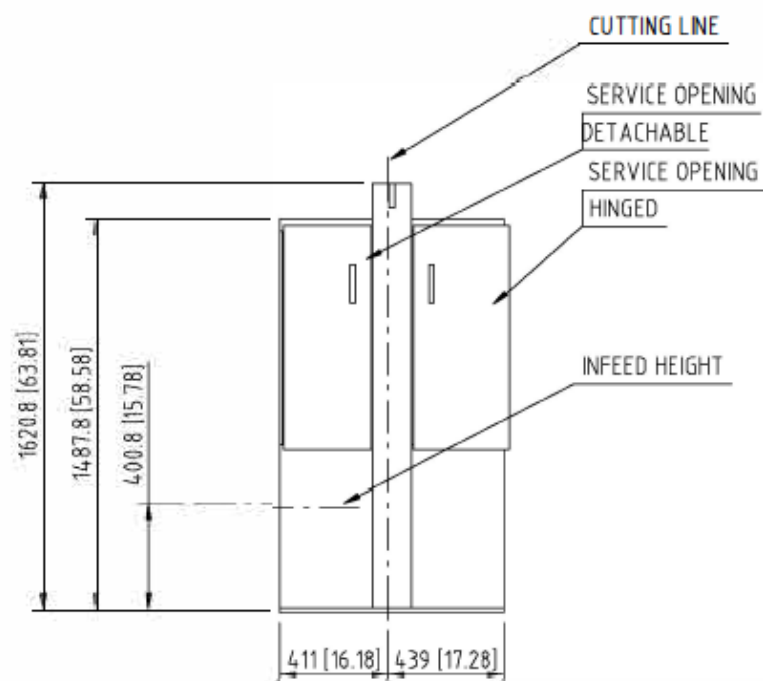
100 - 350 mm

CAPACITY

3 - 5 cbm/hr

WEIGHT


750 kg



STANDARD LAYOUT DRAWING FOR HK 35/10 GUILLOTINE
ALL DIMENSIONS IN MM [INCH]

HYDRAULIC MOTOR:
CONTROL VOLTAGE:
INFEEED CONVEYOR SYSTEM:
DISCHARGE CONVEYOR SYSTEM:

ALL TECHNICAL ALTERATIONS RESERVED

Pos.nr	Mgd.	Bemærkning				Bemærkning	
Kont	Sign		Format	Skala	Erstatter	Erstatter af	
		Titel	F4				
			Tegningsnummer				
Tlf 8734 3113 Fax 8734 3125		denne tegning må ikke kopieres eller på nogen anden måde gøres tilgængelig for tredjemand! this drawing is not to be copied, printed or to be available to any unauthorized person without our specific permission					